



BRIGGS EQUIPMENT SUPPORTS BENCHMARK INTEGRATION AT TRAVIS PERKINS GOWERTON ROAD

Customer: **Travis Perkins**

Brand: **Hyster, Yale, JCB**

Location: **Gowerton Road, Northampton**

Account Manager: **Sean Herrick**

Account Director: **Mat Smith**



The Travis Perkins and Briggs Equipment partnership spans more than 25 years and is driven by a collaborative and innovation led approach from both companies. This philosophy has enabled the UK's premier builders merchant and home improvements retailer to sustainably grow their business whilst being supported throughout with high quality industrial equipment and engineering services. To find out more

SITUATION

The Travis Perkins site at Gowerton Road is one of the nationwide distribution centres for the Benchmark kitchen and joinery products.

Following a significant project that involved moving an entire warehouse worth of Benchmark products into the Gowerton Road facility, Travis Perkins required additional materials handling equipment support to ensure a smooth integration and operation moving forward. The move involved creating 2,500 new pallet spaces to store kitchen worktops and white goods at the 473,000 square foot warehouse.

“This project is a great example of how Travis Perkins and Briggs Equipment work closely together to get the best solution for the site, which in this instance includes efficiency and safety gains. The relationship between the two companies is very good and built over years of working collaboratively together. This partnership will only grow stronger as a result of this project.”

**Ian Lewis, MHE
Facilities & Project
Manager, Travis
Perkins Group**



SOLUTION

To help meet this extra demand, a mixed fleet of equipment that ticked every box with regards to performance, efficiency and suitability was identified. The total fleet number at Gowerton Road now stands at 134 machines and that includes a range of counterbalance forklifts, reach trucks, low level order pickers and JCB teletrucks.

Briggs has also installed a bespoke solution for the battery bay area to help maximise efficiency, reduce downtime and ensure equipment can be used throughout shifts around the clock.

ACTION

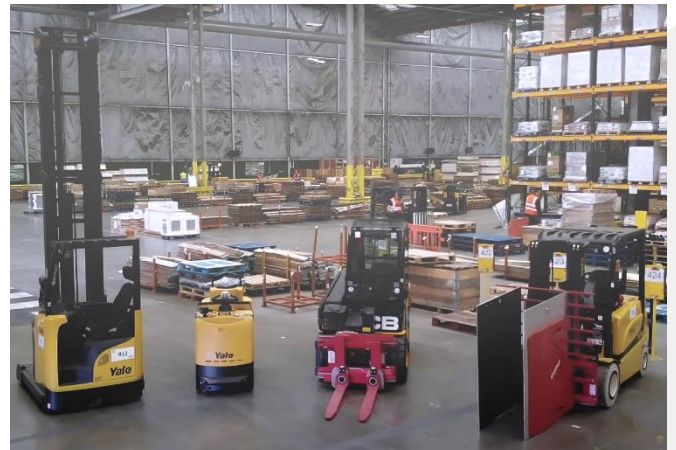
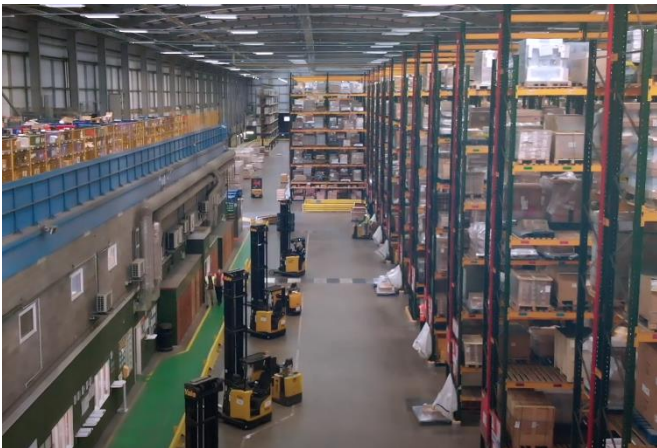
Following installation of the new MHE equipment it's vital that Travis Perkins is able to get the most out of their fleet, especially given the high levels of intensity that the trucks are performing at. As an early adopter and champion of the BE Portal software, the Travis Perkins team are well versed in using the platform and the data it has produced over the years has helped save money and increase efficiency across the board.

In addition to tracking the performance of the machines, BE Portal is now fully integrated with Travis Perkins' statutory inspection provider, which removes the requirement to manually assess each report and ensures 100% compliance.

RESULT

The new equipment has been extremely well received since installation by the operating staff and management teams.

Ian Lewis, MHE Facilities & Project Manager, Travis Perkins Group, commented: "This project is a great example of how Travis Perkins and Briggs Equipment work closely together to get the best solution for the site, which in this instance includes efficiency and safety gains. The relationship between the two companies is built over years of working collaboratively together will only grow stronger as a result of this project."



To see us in action at Travis Perkins, watch this video

T: 03301 23 98 50

E: info@briggsequipment.co.uk

W: www.briggsequipment.co.uk