

# CASE STUDY



## 75 new lifting and handling machines for G&W UK's container terminals



**CUSTOMER:**

**G&W UK**

**INDUSTRY:**

**Rail, Road and Terminals**

**LOCATION:**

**Southampton**

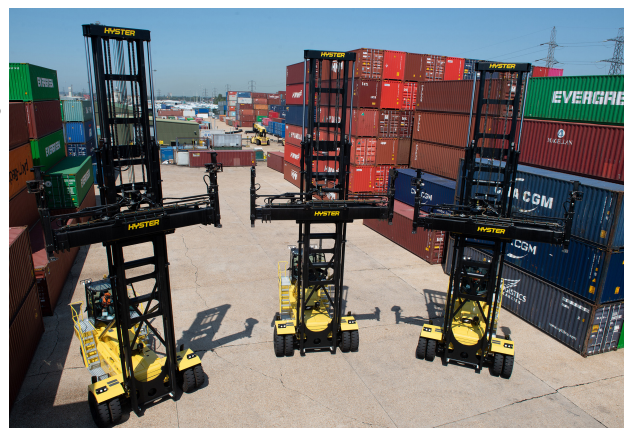
## INTRODUCTION

Freightliner and Pentaver, subsidiaries of Genesee & Wyoming Inc. (G&W), have made a significant investment in 75 new lifting and handling machines from the Briggs Equipment Big Trucks product offering.

## SITUATION

In partnering with Briggs and Hyster, G&W UK have invested in products that lead the way in telematics, providing live feedback on the machine's health, together with key operational data relating to lifts, fuel usage and non-productive running.

The Tier 4 engines produce lower emissions and when combined with auto shut-down technology, further endorse G&W UK's commitment to a carbon neutral future.



## SOLUTION

The new machines, which include Hyster reachstackers, Terberg terminal tractors and Hyster empty container handlers, will be deployed at G&W UK's container terminals. The initial batch of equipment was recently delivered, with the additional 40 machines to follow in the coming months.

With the employee central to the operation, cab ergonomics are an essential component to a safe and efficient working environment, and the new equipment provides adjustable sliding units with full air suspension, creating maximum comfort. The in-cab 360-degree camera system and on-screen telematics displays, puts the driver's safety and comfort first.



## ACTION

This renewal highlights Briggs Equipment's capability of forming and maintaining positive long term relationships with our customers. The importance of the work carried out at Freightliner's locations is far reaching, with many businesses and industries dependent on a swift and flawless operation. These customers need to know that their goods will be transported safely and on time.

## RESULT

Chris Lawrenson, Managing Director of Terminals for G&W's UK/Europe region companies, commented:

"We pride ourselves on providing a best in class service to our customers and a safe working environment for our employees, and investing in these latest technically-advanced machines will support us in enhancing that service further across our three core platforms of Rail, Road and Terminals.

"Our focus on the customer experience, with substantial investments in cutting-edge technology, facilities and rolling stock will help cement our future as the transport and logistics provider of choice in the UK."

**Find out more about how Briggs Equipment  
can help keep your business moving**

**T: 0330 1 23 98 50**

